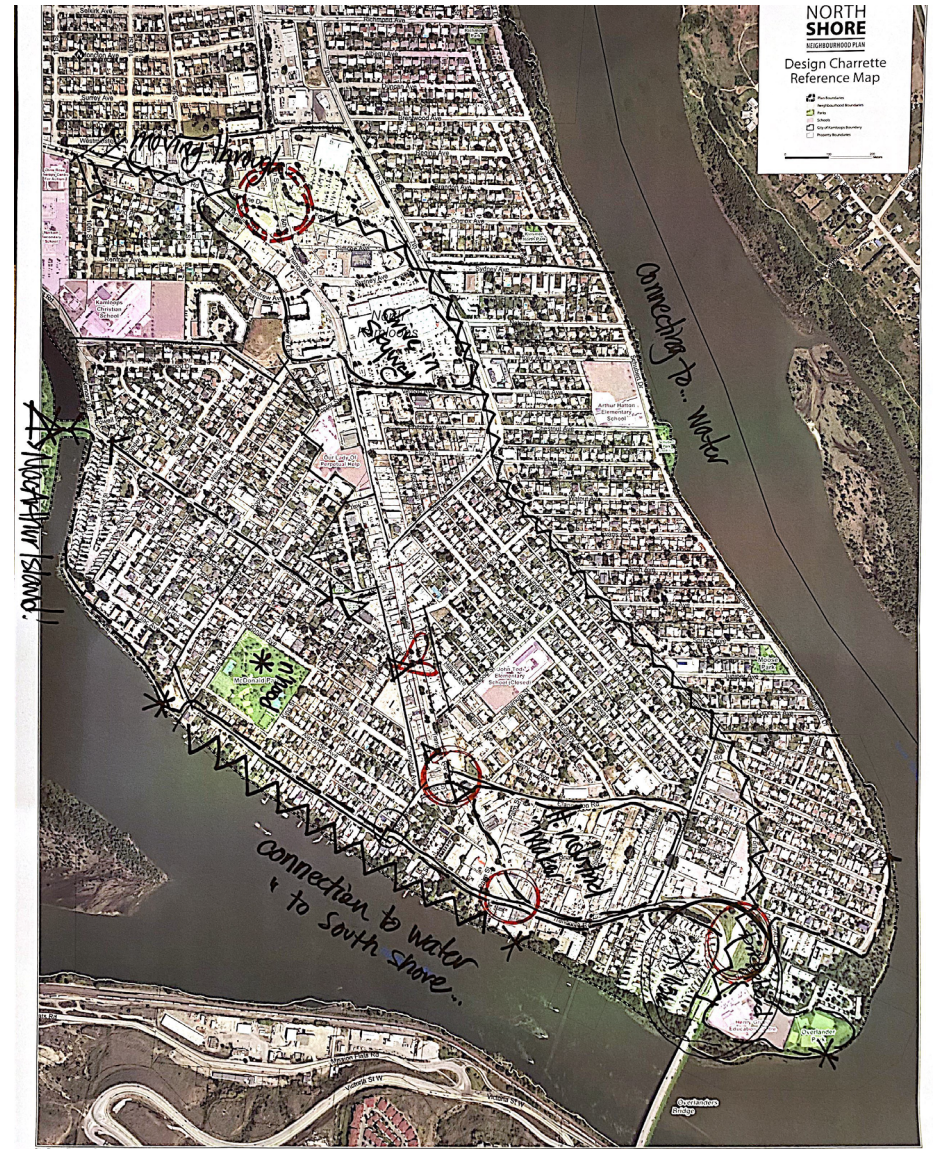


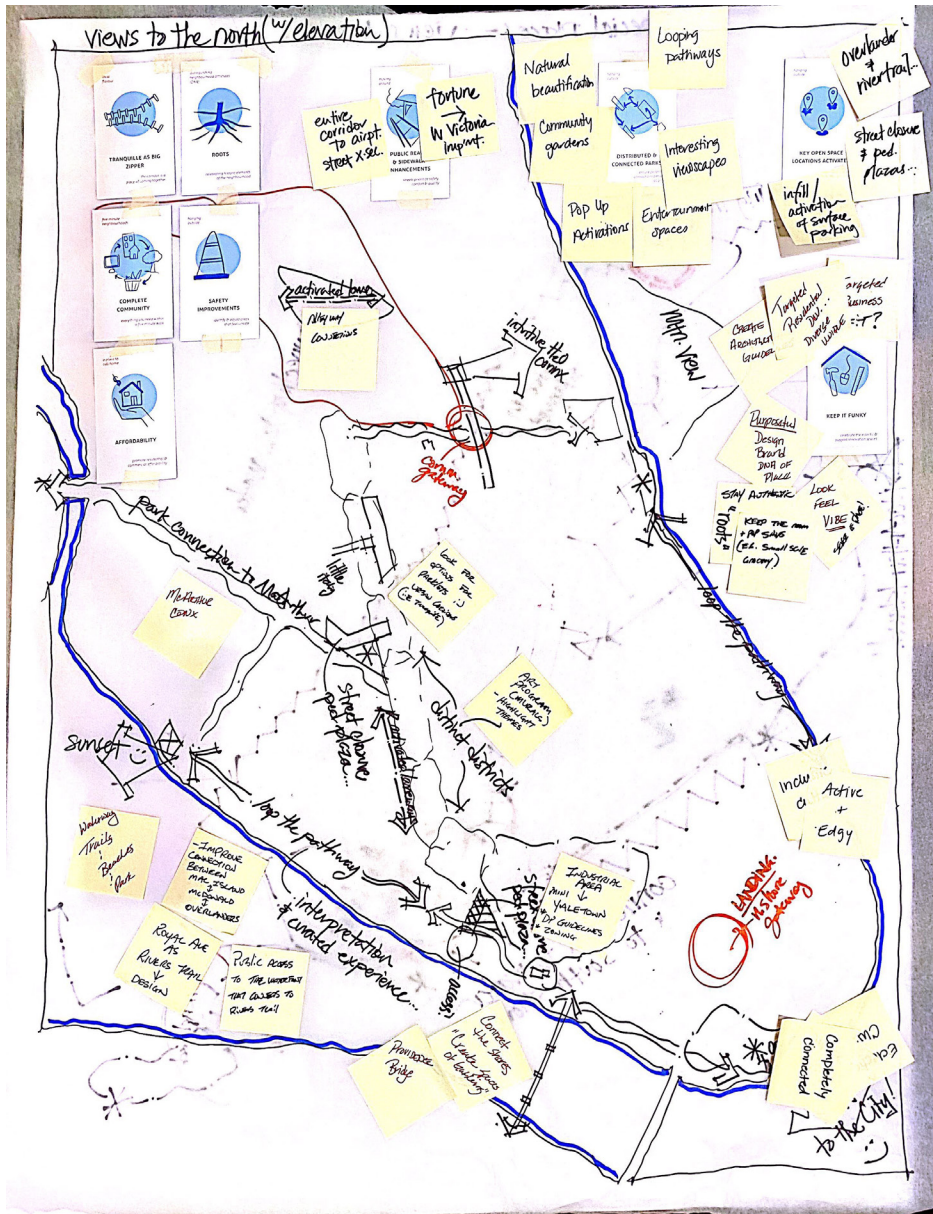
## 5.0 APPENDICES »

APPENDIX A   STAFF & STAKEHOLDER WORKSHOP EXERCISES . . . .	A-2
APPENDIX B   STAFF & STAKEHOLDER WORKSHOP REPORT OUT . .	A-7
APPENDIX C   EMERGING IDEAS PUBLIC EVENT FEEDBACK . . . . .	A-9

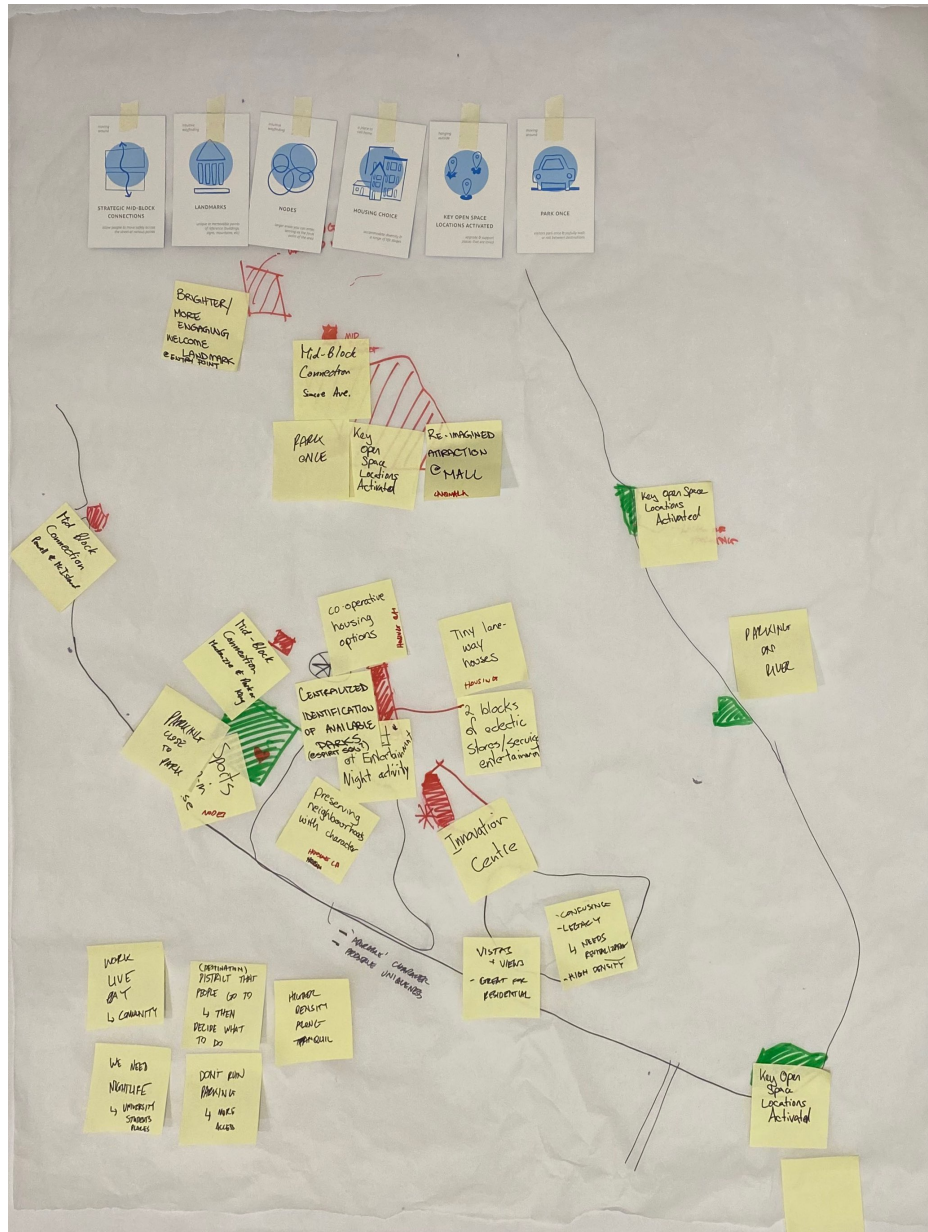


[illegible]

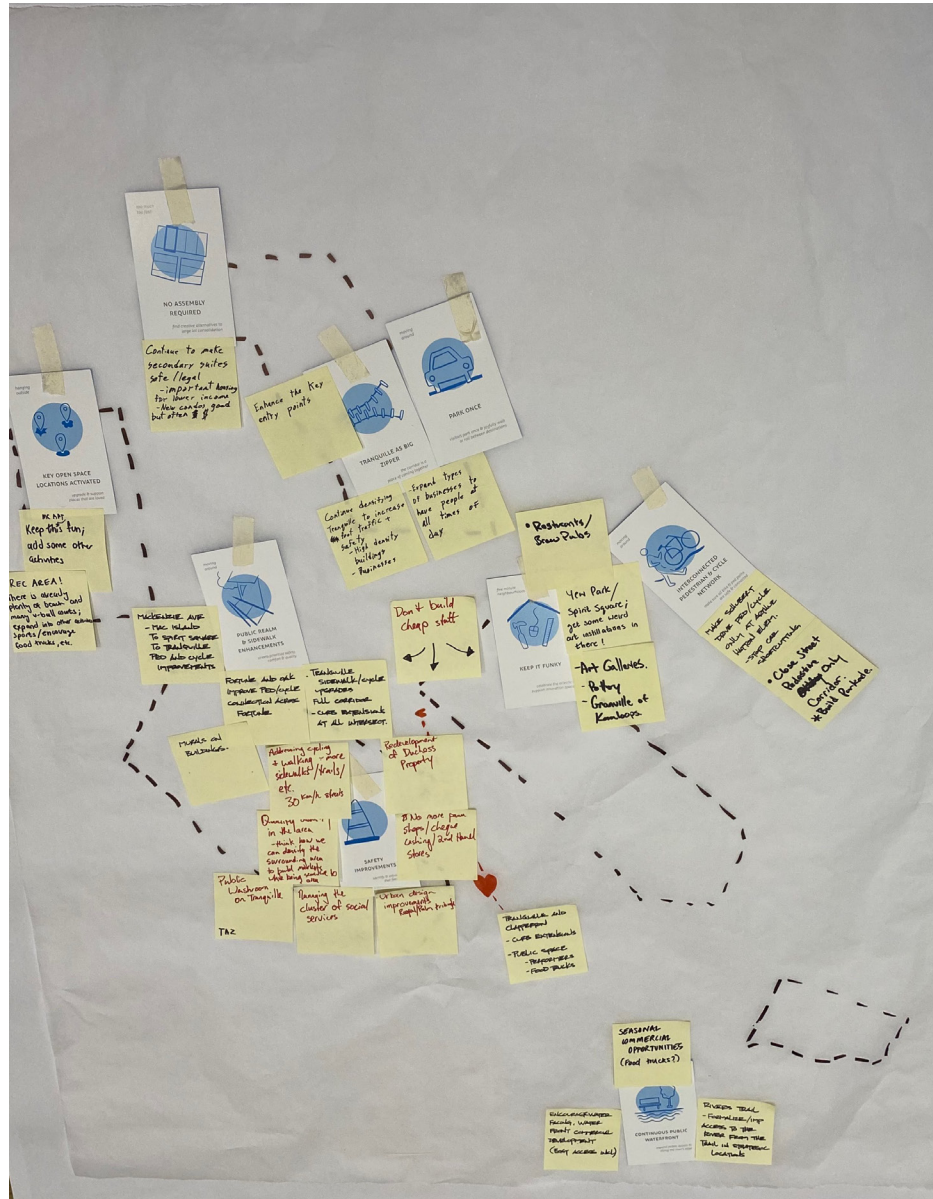




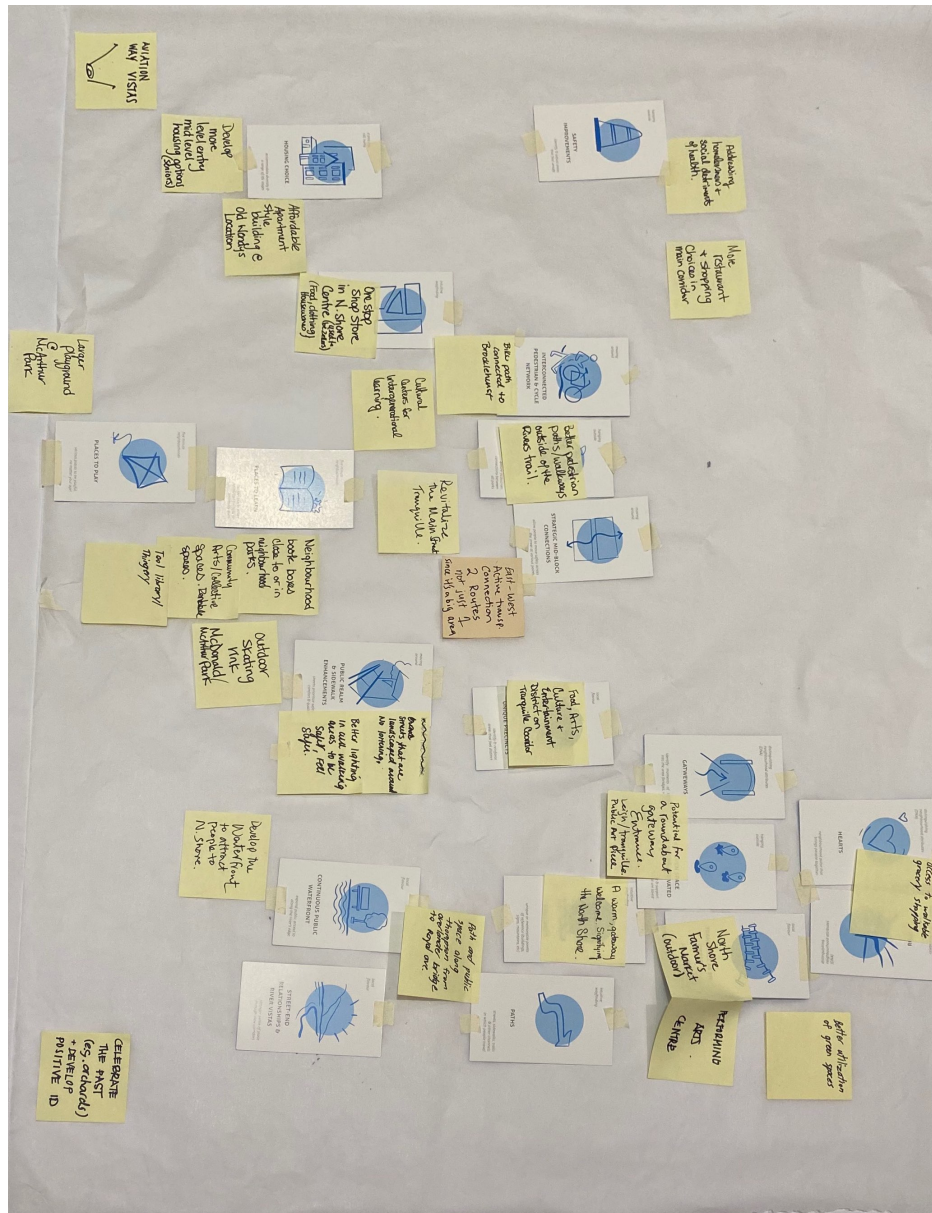














# APPENDIX B | STAFF & STAKEHOLDER WORKSHOP REPORT OUT

Note: The following pages present the themes heard at the 'report out' following neighbourhood mapping and design exercises.

activated alleys / mews  
 riverfront / river trail  
 food hub / market  
 funky / gritty spaces

infill parking excels  
 MacArthur — Spirit Greenway  
 Complete — affordable!

street closures for pedestrian enhancement  
 use parking spaces ... better  
 access to water!  
 seasonal commercial opps  
 slow & steady improvement:  
 incubating spaces — "parklets", "shoplets", live/work  
 gateways to celebrate the community  
 waterfront parkway  
 & pedestrian river X-ing

multiple "hearts" w/in n'hoods  
 hierarchy of hearts ↓ spiritual, locational, etc.  
 pedestrian connections  
 & places to play & learn  
 "sharing" spaces / resources  
 identifying / establishing "anchors"  
 history informing identity — "admirable" character  
 connections beyond the study area  
 WORK — eclectic mix along the corridor  
 PLAY — student activity & pedestrian safety



pedestrian enhancements to  
the town centre → make it  
a "place" / make it comfortable!

shopping centres as "campuses"  
activating laneways (eg. Simcoe)

Keep it funky! unique identity  
authentic to place  
Mix of uses / live/work / performance

connecting to the river

- Views
- access
- places to rest
- "interpretation"

hearts beating w/ arts & culture  
programming of public spaces

"precincts" / gateways & transitions

multiple "hearts" w/in n'hoods  
hierarchy of hearts

pedestrian connections  
& places to play & learn

↓  
spiritual,  
locational,  
etc.

"sharing" spaces / resources

identifying / establishing "anchors"

history informing identity

"admirable" character

connections beyond the study area

WORK — eclectic mix along  
the corridor

PLAY — student activity & pedestrian  
safety



# APPENDIX C | EMERGING IDEAS PUBLIC EVENT FEEDBACK

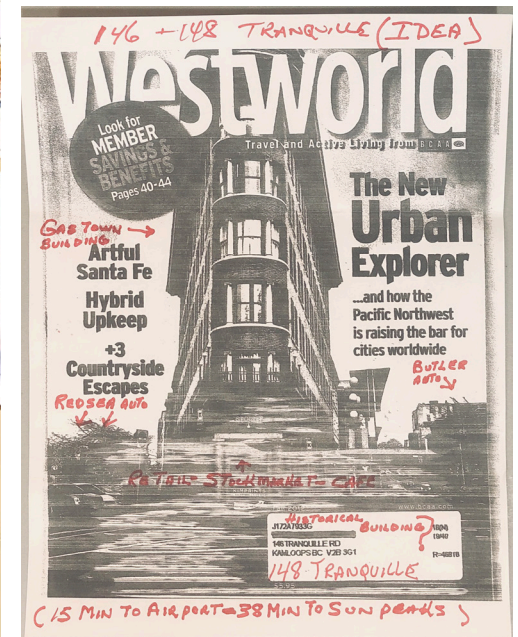
Note: The following pages present written feedback received from participants of the "Emerging Ideas" public event











printed input submission from public event participant